

SEKONIC OPTICAL MARK READER

UL Approved, CE RoHS Complied



SR-3500
(Main Body)



SR-6500
(Main Body + Select Stacker)

- EASY TO CONTROL**
- HIGH ACCURACY**
- HIGH PERFORMANCE**
- HIGH RELIABILITY**

*Using Optical Mark Recognition (OMR) Technology with less than 1% error rate
Easier, Simplier, and more Accurate than an Image Scanner*

EASY - - - USB Connectable!

- Use SEKONIC OMR with your Notebook & Mobile PC.
- Any Laptop / Notebook / Mobile PC Connectable!
- SR-3500 / SR-6500 have traditional RS-232C communication.

ACCURATE (reduce reading error)

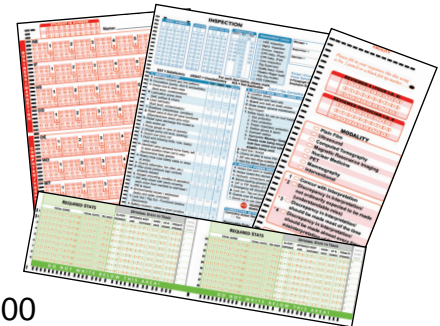
- Reduce human data entry error.
- OMR Technology is more accurate than Optical Scanner due to recognizing ONLY density of mark sense (no need to recognize any character from image)

PERFORMANCE (saving time -- reducing the cost)

- Approximately 3,500 pages per hour (SR-3500)
- Approximately 6,500 pages per hour (SR-6500)

COMPATIBILITY

- Fully Compatible with our previous OMR's
 SR-3500: Fully compatible with SR-2300 / Compatible with SR-600
 SR-6500: Fully compatible with SR-5500 / Compatible with SR-900/9000
- You can choose operating software
 "Markview" - our standard software is fit for SEKONIC OMR;
 or you can feel free to select operating software made for our OMR's



OMR Reader is preferred in many applications over contact image scanners due to high speed and better accuracy.

Some of the applications/fields that use OMR technology today:

EDUCATION

- Attendance
- Class Scheduling
- Classroom Testing
- Course & Instructor Surveys
- Entrance Exams
- Student Analysis
- Student Surveys
- Administrative Functions

MEDICAL

- Clinical Evaluations
- Electronic Medical Records
- Health Risk Analysis
- Medical ROS
- Patient Billing
- Patient Follow-Up
- Wellness Tracking

BUSINESS

- Customer Satisfaction Surveys
- Elections and Ballots
- Employee Surveys
- Food Industry
- Inventory Management
- Payroll Tracking
- Quality Control
- Safety Observation



LINCOLNSHIRE PRINTING

SEKONIC OPTICAL MARK READER SR-3500 / SR-6500

SR-3500



SR-6500



*Features & Specifications are subject to change without notice.

*Windows 2000, Windows XP, Windows Vista are registered trademarks or trademarks of Microsoft Corporation in US and other countries. Mention of these countries is for informational purposes only and constitutes neither endorsement nor a recommendation.

MAIN FUNCTIONS

Reading Speed (per hour):	Approximately 3,500 Pages	Approximately 5,500 Pages (with stacker)
Input Process:	ADF / Hand Feed (Adjusted by Operation Mode)	
Form Input (Input tray):	500 Forms	
Form Output:	500 Forms	500 Forms (accept) / 150 Forms (reject)
Mark Writing Implements:	Pencil (Infra Ray) Pen & Pencil (Visible Red Ray - - Option)	
Read Technique	Reading Reflective Sensor	
Number of Read Heads:	1	
Mark Discrimination:	256 Degrees (16 Steps of Discrimination)	
Calibration:	Automatic	
Mark Shapes:	Rectangles, Ovals, and Circles	

CONNECT WITH PC (INTERFACE)

Communication Interface:	USB (2.0) / RS-232C Serial Interface
Baud Rate (RS-232C Mode):	9,600 to 115,200 bits/second

FORMS

Paper Thickness:	20# Bond to 100# Tag - - Minimum 24# Recommended
Paper Size:	WIDTH: 2.5 Inches to 9.0 Inches / 63.5 to 228.6 (mm) LENGTH: 4.3 Inches to 14 Inches / 110 to 355.6 (mm)
Mark Position:	5,232 Mark Positions (Per each page)
Maximum Scan Area:	48 columns, 109 positions

OPERATING CONDITIONS

Temperature:	41 Degrees to 95 Degrees Fahrenheit / 5 Degrees to 35 Degrees Celsius	
Relative Humidity:	30-80%	
Power Requirements:	100-220VAC 50Hz/60Hz	
Noise:	60db	65db
Dimensions (W x H x D)	14" x 9" x 22.5" 365 x 227 x 585 (mm)	14" x 19" x 31.5 " with stacker 365 x 490 x 800 (mm) with stacker
Weight	38lb / 17Kg	80lb / 36Kg

OPTIONAL FUNCTIONS

Backside Reading:	Option	
Select Stacker:	Option	Standard
Printer:	Option	Standard
Bar Code Reader (Horizontal):	(JAN / EAN / UPC / ITF / CODE39 / EAN128 / CODE93)	
Bar Code Reader (Vertical)	(JAN / EAN / UPC / NW7 / ITF / CODE39 / INDUSTRIAL 2 OF 5 / COOP 2 OF 5)	
Pen & Pencil Reading:	Option (Black and Blue Ball-Point-Pen)	
Utility Software:	"Markview"	

The following OPTIONAL Functions make Sekonic OMR's more effective and easy in use.

- * **Printer** - This interactive printer permits print data read from the form during the scanning process.
- * **Barcode Reader (Horizontal / Vertical)** -This barcode reader accepts UPC/EAN/JAN, 3 of 9, Interleaved 2 or 5, Coda bar, Code 128, NM7, ITF and more. This option permits the scanner to decode most of the standard barcode symbologies from the form.
- * **Pencil & Pen marking acceptable** -This function permits to use black and blue pen to fill the bubble mark in addition to pencil.
- * **Select Stacker** - This is an option for SR-3500 and is standard for SR-6500
- * **Operating Software ("Markview" software)** - <PC- Windows 2000, Windows XP, Windows Vista> This software can collect mark data (outputted by CSV and TXT format.) and easy to make layout (template). This software, test forms, and sample forms, provide the customer to set up and confirm the major functions of this OMR very easily.